

Siwa



Schuitemaker

Schuitemaker

SIWA
720

Schuitemaker

Master your Forage



**Developed for
the heavy job**

The indispensable link

in the chopping train

As a contractor, working efficiently and quickly is of great importance during the silage job. You want to perform to the maximum, so that you can serve all your customers on time. Independent of the conditions.

The Schuitemaker Siwa silage wagon is designed to assist the contractor during heavy work. Load more, unload faster.

Qualitative and proven forage harvesting with the Schuitemaker Siwa silage wagon, **today and tomorrow.**



Mastery

from the first moment

In 1964 Schuitemaker was one of the first to introduce its silage wagon.

Originally under the name UTW, this machine has developed into the machine that is known today as the Schuitemaker Siwa.

Unique to the Schuitemaker Siwa are the extremely strong plate profiles that are rolled in our own factory. Durable quality with focus on a long and intensive lifetime. Craftsmanship that Schuitemaker is proud of.

Characteristic of the Schuitemaker Siwa are its compact construction, large capacity and ability to unload quickly. **Always ready for use at the moments that matter.**





Schuitemaker

SWA
720



Schuitemaker

Schuitemaker

Schuitemaker

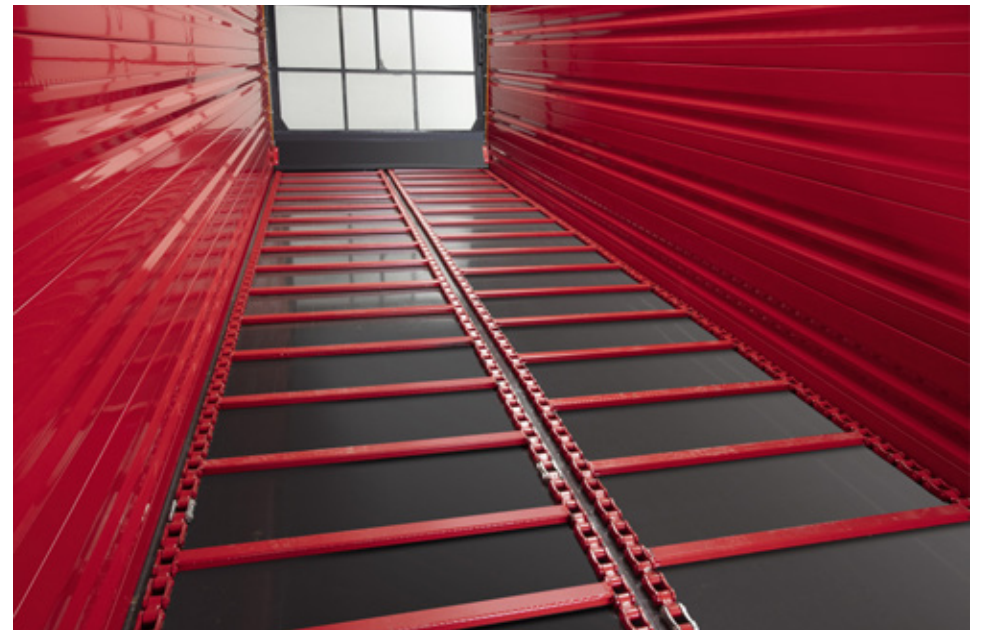
CE 172

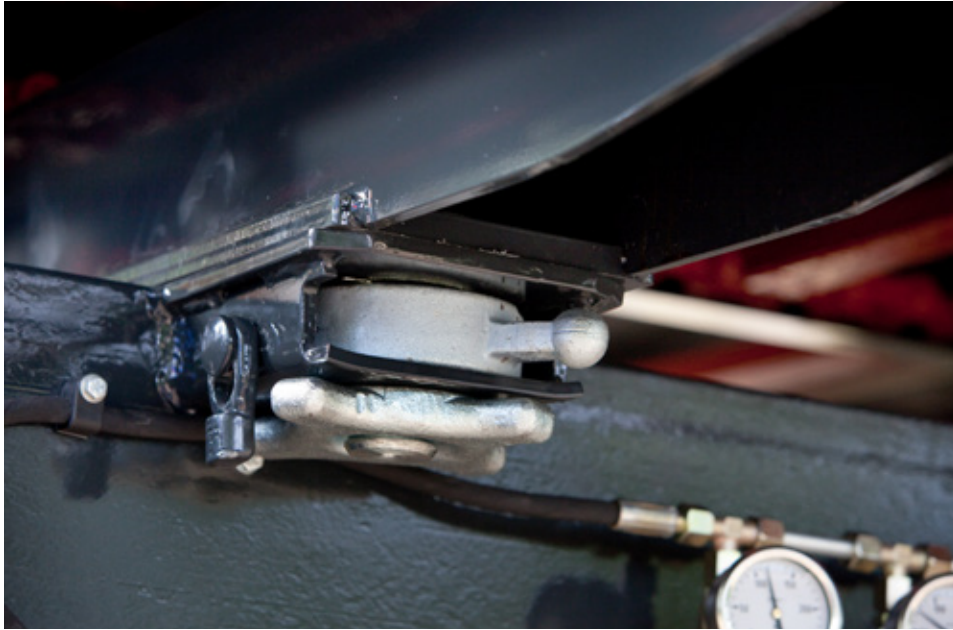
The powerful Siwa concept

Indispensable on the chopping train for over 55 years.

The silage wagon is compactly built and, thanks to its ideal weight distribution, can be used without any problems for grass and maize harvesting. Equipped with the unique Schuitemaker profiled steel plates, a very strong cage construction is created so that other products may also be transported. Guaranteed to have a long service life in intensive use.

During peaks in contract work, rapidity is of great importance. The Schuitemaker Siwa has an open floor chain with a high tensile strength so that the crop can be unloaded quickly. **Ready for the next ride.**





Solid and flexible thanks to Twistlock attachment

The connection between the superstructure and the chassis of all Siwa silage wagons is formed by a robust Twistlock attachment. A solid construction that achieves flexibility. The superstructure can be replaced by another machine body, which makes the robust chassis multi-functional.



Stable everywhere due to a low center of gravity

The Schuitemaker chassis are robust, indestructible and always stable. The standard pendulum tandem on the tandem axle wagons has a low centre of gravity, so that it tows lightly and remains stable whilst driving on the silage clamp. Hydraulic suspension with even greater driving comfort is optional on the tandem axle and standard on the tri-axle versions.

Better ensilaging results

through smooth distribution

The Siwa W version is equipped as standard with two mechanically driven distribution beaters at the back of the wagon. These open, aggressive distribution beaters distribute the product evenly over the silage clamp.

Because of the even distribution it takes less time to distribute the crop on the clamp and more time is left over for properly driving and compacting the silage. This benefits the conservation and preservation of the quality of the ensilaged product.



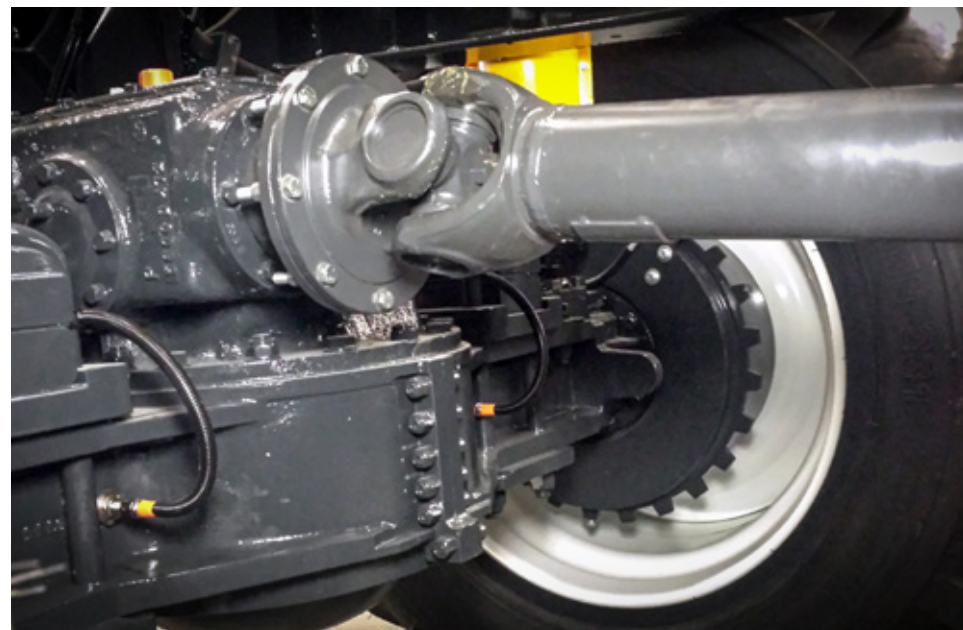
Deployable

under all conditions

In wet areas with less load-bearing soils, one does not want to or cannot turn too much on the headland to avoid rutting. With a tipping Siwa it is easy to drive backwards, because you can look underneath the superstructure. This gives a good view on the forage harvester so that no silage is spilled. Another advantage is that you can unload faster on a steep clamp, because the bucket is positioned horizontally or even tilted slightly backwards.

The four-wheel mechanically driven Schuitemaker Siwa silage wagon has been specially developed for extremely wet and difficult circumstances. In addition, the drive is easy to use when driving forwards or backwards on to the silage clamp.

These models are available as special versions of the Siwa 720.



Technical specifications

TYPE:		SIWA 100-SERIES				
			660 S/W	720 S/W	780 S/W	840 S/W
Volume DIN		m ³	38	42	45	48
Volume (DIN) max*		m ³	44	48	51	54
Maximum total weight		kg	24.000	24.000	34.000	34.000
Total dimensions	Length	cm	913	973	1033	1093
	Width	cm	291	291	299	299
(without steel extension)	Height	cm	370	370	370	370
Box dimensions	Length	cm	737	797	857	917
	Width	cm	240	240	240	240
(without steel extension)	Height	cm	210	210	210	210
Standard tyres			BKT 710/50 R26,5	BKT 710/50 R26,5	BKT 710/50 R26,5	BKT 710/50 R26,5
Max. tyre height (only icw 10 cm extension)		cm	1520	1520	1520	1520
30 tons following steered pendulum tandem			●	●	-	-
30 tons forced steered pendulum tandem			○	○	-	-
30 tons hydraulic suspended following steered tandem			○	○	-	-
40 tons hydraulic suspended forced steered tandem			○	○	-	-
40 tons hydraulic suspended electric/hydraulic steered tridem			-	-	○	○
Hydraulic operated frontpanel			○	○	○	○
Hydraulic operated drawbar			○	○	●	●
Hydraulic operated parking shuffle			○	○	●	●
Handpump for hydraulic support jack / parking shuffle			○	○	○	○
Mechanically driven scraperfloor			●	●	●	●
Hydraulically driven scraperfloor			○	○	○	○
10 cm/30 cm steel extension (depending on tyre height)			○	○	○	○
Covering system			○	○	○	○
Extended backdoor (+3,5 m ³)			-	○	○	○
Airbrakes			●	●	●	●
Electric airbrake control			○	○	-	-
Automatic airbrake control			○	○	○	○
Scharmüller ball coupling K80 (80 mm)			○	○	○	○
Steering bar with ball coupling K50 (50 mm)			○	○	○	○
Twistlock			●	●	●	●
Weighing system			○	○	○	○
Electrical operation (max 2xEW & 4x DW)			○	○	○	○
Set of 3 LED working lights / Set of 5 LED working lights			○	○	○	○
Rotating flashlight on backdoor			○	○	○	○
Hydraulic folding bumper			○	○	○	○

* ic.m. 30 cm steelextension

Explanation of symbols: ● = Standard ○ = Optional - = Not available

All data has been compiled with the greatest possible care, but are non-binding. Changes in construction/design are always possible.

Schuitemaker

Master your Forage

EN

Morsweg 18 T +31 (0) 548 - 51 41 25
7461 AG Rijssen E info@svgroup.nl

veenhuis.com • svgroup.nl

 **SV**group
Schuitemaker  **veenHUIS**