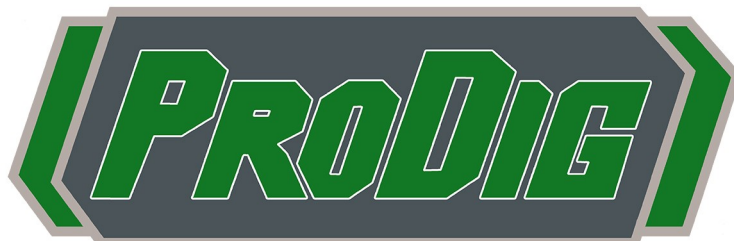




STRENGTH



INNOVATION



## Grass Handling Range

MANUFACTURERS OF QUALITY MACHINERY ATTACHMENTS  
FOR AGRICULTURAL AND CONSTRUCTION SECTOR

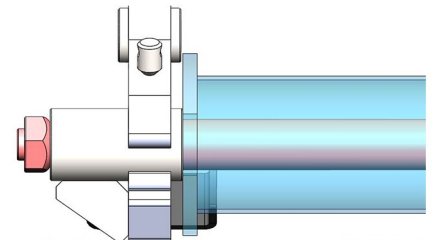


## Bale Handler

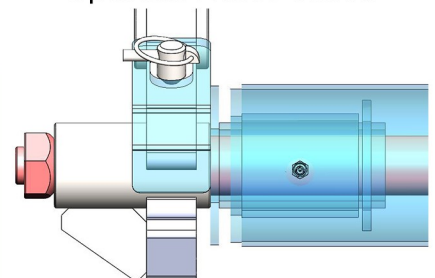
The Prodig Bale Handler is designed and manufactured for reliability and extremely long service life. The unit is manufactured with high operator visibility, the main legs are engineered and fabricated from High Yield plate and quick release large diameter rollers make this a fast, efficient and versatile attachment that can be fitted to tractor, tele-handler or articulated loader.

- Hydraulic bale handler for quick and efficient moving and stacking of bales.
- Large diameter rollers reduce plastic stress and ensure safe handling of wrapped bales.
- Heavy duty legs fabricated using Hardox plate and heavy wall tine bush for long life.
- 1250mm stone fork tines as standard.
- Bushings and grease points on all pivot points.
- Oversize hydraulic ram means the handler can easily rip bales apart in feeding season.
- Open centers 1575mm, closed centers 815mm.
- Uniquely designed bale handler means it is suitable for both tractors and telehandlers.
- Bolt on hitches available to fit all machines.
- Optional unique locking system on the tubes means removal takes seconds, without tools.
- The best tube roller system on the market for free spinning greasable tubes.

Standard Tubes



Optional Roller Tubes



### Bale Handler

|                     |  |
|---------------------|--|
| <b>BH 500</b>       |  |
| Height (mm)         | 600 (main frame)   |
| Width (mm)          | 1235   |
| Depth (mm)          | 306 (depth of main frame)<br>1490 (depth of full assembly) |
| Weight (kg)         | 183 (including roller tubes)                               |
| Open centres (mm)   | 1575   |
| Closed centres (mm) | 815  |

All of our attachments are designed to operate at 200 BAR hydraulic pressure. Machines operating above 200 BAR will require a relief valve.



## Bale Grab

The Prodig Bale Grab is an extremely robust unit for moving bales with minimal damage to the plastic wrap. The unit is suitable for tractor, tele-handler and articulated loader.

- Hydraulic bale grab for quick and efficient moving and stacking of bales.
- Wrap damage is eliminated by our tubular arms covering a large area of the wrapped bales.
- Arms can be locked in multiple positions on either side for stacking purposes.
- The grab allows for stacking bales on their end or on their side.
- Excellent width capabilities from 1870mm to 413mm.
- Can handle round or small square bales for loading or unloading.
- The frame depth is kept at a minimum so the bale sits closer to the machine.
- Bushings and grease points on all pivot points.
- Bolt on hitches available to fit all machines.
- Optional add-on check valve available for constant grip and safety.

### Optional check valve



### BALE GRAB

Height (mm)

Width (mm)

Depth (mm)

Weight (kg)

Open centres(mm)

Closed centres(mm)

### BG 500

700 Height of paddle

415 Height of frame

1384

216 Depth of main frame

1185 Depth of full assembly

171

1870

413

All of our attachments are designed to operate at 200 BAR hydraulic pressure. Machines operating above 200 BAR will require a relief valve.



## Bale stacker

The Prodig Bale Stacker is an attachment designed to increase efficiency when handling large numbers of round and square bales with units available to suit tractor loader or tele-handler/articulated loader.

- Hydraulic grab for moving and stacking large square and round bales.
- Removable bottom tine bar which can be floating, or fixed up or down as standard.
- Curved tines in arm spaced to catch all bale types.
- Double hydraulic ram system with no troublesome linkage bars.
- Fitted as standard- adjustable pressure relief valve to reduce damage to bales from over gripping
- Top push bar with height adjustment to stabilize the stack when retracting bottom tines.
- Heavy duty construction using structural grade box section and plate throughout.
- Available with bolt on hitch system to suit all machines.
- All hinge points fitted with greasable.
- Unique locking system on bottom bar allows it to be removed in seconds with no tools required.
- Arms made with plate section for a stiffer frame.
- Bolt on hitches available to fit all machines.

### Bale Stacker

Height (mm)

**C320**

2080

**C430**

2750

Width (mm)

1840 when opened

1840 when opened

Depth (mm)

715 when closed

715 when closed

Capacity

3(3') rectangular bales  
or 2 round bales

4 (3') rectangular bales  
or 3 round bales

Weight (kg)

529 including bottom bar  
415 excluding bottom bar

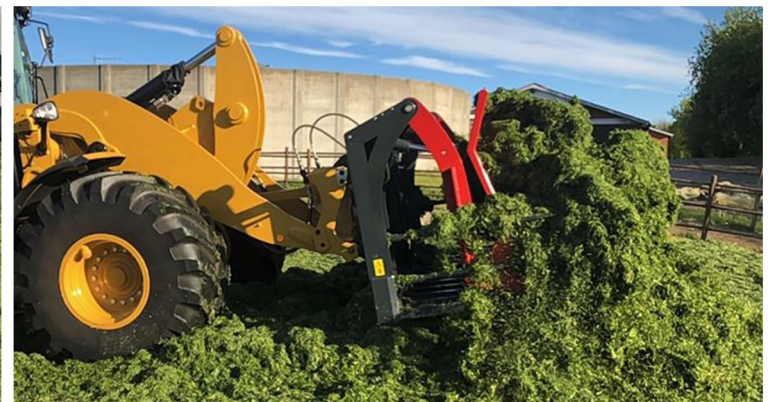
614 including bottom bar  
512 excluding bottom bar

Rams

2 x 70mm Bore

2 x 70mm Bore

All of our attachments are designed to operate at 200 BAR hydraulic pressure.  
Machines operating above 200 BAR will require a relief valve.



## Push Off Grass Forks

The Prodig Push Off Grass Fork is designed to quickly and efficiently handle high volumes of grass silage on large horsepower tractors and can also be used on tele-handlers/wheeled loaders.

- Designed for use on large tractors & loaders.
- Heavy duty construction using high yield structural hollow sections and plates.
- Available in widths from 2.5m to 4.0m
- 1400mm square profile Hardox tines used in bottom bar for long service life. Our full range of Hardox tines are manufactured incorporating a replaceable wear tip meaning the tine never has to be replaced.
- 40mm pivot point pins fitted with greasable bushings.
- Full length hardened cutting edge wear plates on bottom section.
- Fitted with hydraulic flow divider valve and buffer pads to reduce impact on gate.
- Greasable bushings on all pivot points.
- Optional extras: Lighting kit -(no:2 front facing work lights & transport front & rear facing side markers lights) or (transport front & rear facing side markers lights), Adaptor brackets for industrial loaders, 3 point linkage/euro 50 combo hitch, colour options, gate lock.

| Push Off Grass Forks | POGF 2500     | POGF 2750     | POGF 3000     | POFG 3300     | POGF 3600     | POGF 4000     |
|----------------------|---------------|---------------|---------------|---------------|---------------|---------------|
| Height (mm)          | 1475          | 1475          | 1475          | 1475          | 1475          | 1475          |
| Width (mm)           | 2500 (8ft)    | 2750 (9ft)    | 2995 (10ft)   | 3300 (11ft)   | 3600 (12ft)   | 4000 (13ft)   |
| Depth (mm)           | 1420          | 1420          | 1420          | 1420          | 1420          | 1420          |
| Weight (kg)          | 1089*         | 1166*         | 1243*         | 1320*         | 1383*         | 1470*         |
| Tine length          | 1400mm (55")  | 1400mm (55")  | 1400mm (55")  | 1400mm (55")  | 1400mm (55")  | 1400mm (55")  |
| Number of Tines      | 10            | 11            | 12            | 13            | 14            | 16            |
| Tine Spacing(mm)     | 230           | 230           | 230           | 230           | 230           | 220           |
| Ram                  | 2 x 70mm Bore | 2 x 70mm Bore | 2 x 70mm Bore | 2 x 70mm Bore | 2 x 70mm Bore | 2 x 70mm Bore |

All of our attachments are designed to operate at 200 BAR hydraulic pressure.

Machines operating above 200 BAR will require a relief valve.

\*Weight shown is for 3 point linkage hitch. Plus 100kg for 3 point linkage/euro 50 combo hitch.



# Folding Grass Fork



## Folding Grass Forks

The Prodig Folding Grass Fork is made to handle the increased output from a new generation of high capacity silage harvesters. Our fork is designed to withstand the rigorous demands of today's busy contractor with clever designs to reduce down time. Our fork when folded is also one of the narrowest on the market making road travel easier.

- Designed for use on large wheel loaders.
- Heavy duty construction using high yield structural hollow section and plate.
- Available in widths from 3675mm to 4880mm.
- 1525mm X 50mm square profile Hardox tines with optional 1830mm long tines available.
- Our Hardox tines are made incorporating a replaceable wear tip meaning the tine never has to be replaced.
- 60mm pivot point pin fitted with replaceable hardened steel bushings.
- Hardened cutting edge full length of bottom section.
- Fitted with Hydraulic accumulator & ram cushioning to increase pivot point lifespan.
- Side wings can be locked in closed position for safe road transport.
- Double acting hydraulic ram on each wing.
- Incorporates a unique wing locking system when open which absorbs the stress and strain which would otherwise be all loaded on the pivot pin.
- Greasable bushings on all pivot points.
- Optional extras: Lighting kit -(no:4 front facing work lights & transport front & rear facing side markers lights) or (transport front & rear facing side markers lights) folding/removable/z-linkage spill frame, extra side tines, colour options, transport tine guard, hydraulic flow divider valve.

| Folding Grass Forks    | FGF 3600       | FGF 4200       | FGF4900        |
|------------------------|----------------|----------------|----------------|
| Height (mm)            | 1675           | 1675           | 1845           |
| Width Open (mm)        | 3675mm (12ft)  | 4235mm (14ft)  | 4880mm (16ft)  |
| Width Closed (mm)      | 2567mm (8ft5") | 2567mm (8ft5") | 2567mm (8ft5") |
| Depth (mm)             | 1850           | 1850           | 1850           |
| Weight (kg)            | 1275           | 1410           | 1510           |
| Tine length            | 1525mm (5ft)   | 1525mm (5ft)   | 1525mm (5ft)   |
| Tine width             | 50mm Hardox    | 50mm Hardox    | 50mm Hardox    |
| Number of bottom Tines | 14             | 16             | 18             |
| Tine Spacing (mm)      | 227            | 227            | 227            |
| Ram                    | 2 x 70mm Bore  | 2 x 70mm Bore  | 2 x 70mm Bore  |

All of our attachments are designed to operate at 200 BAR hydraulic pressure.  
Machines operating above 200 BAR will require a relief valve.



# Continental Folding Grass Fork



## Continental Folding Grass Forks

The Prodig Continental Folding Fork is built with the same strength and durability as our standard folding fork but is designed for continental conditions with longer drier grass and large quantities of maize silage. Our fork when folded is also one of the narrowest on the market making road travel easier.

- The fork is fitted with wider tine spacing that our standard folding fork. This is to help longer, dryer grass silage to flow through the fork, making it easier to disperse on the pit.
- During maize season, the fork can then be fitted with a bolt on maize blade and tine infills which allows the fork to carry, disperse and level maize silage with ease.
- Available in widths from 3675mm to 4880mm
- 1525mm X 50mm square profile Hardox tines with optional 1830mm long tines available.
- Incorporates a unique wing locking system when open which absorbs the stress and strain which would otherwise be all loaded on the pivot pin.
- Fitted with a hydraulic accumulator & ram cushioning which pressurises the wings downward and acts as a damper which also assists with prolonging pin and bushing lifespan.
- 60mm pivot pin fitted with replaceable hardened steel bushings.
- Full width hardened cutting edge fitted on bottom section
- Optional extras: Lighting kit -(no:4 front facing work & transport front & rear facing side markers lights) or (transport front & rear facing side markers lights) folding/removable/z-linkage spill frame, extra side tines, colour options, transport tine guard, maize blade, hydraulic flow divider valve.

| Folding Grass Forks    | FGF 3600       | FGF 4200        | FGF4900         |
|------------------------|----------------|-----------------|-----------------|
| Height (mm)            | 1675           | 1675            | 1845            |
| Width Open (mm)        | 3675mm (12ft)  | 4235mm (14ft)   | 4880mm (16ft)   |
| Width Closed (mm)      | 2567mm (8ft5") | 2567mm (8Fft5") | 2567mm (8Fft5") |
| Depth (mm)             | 1850           | 1850            | 1850            |
| Weight (kg)            | 1168           | 1275            | 1400            |
| Tine length            | 1525mm (5ft)   | 1525mm (5ft)    | 1525mm (5ft)    |
| Tine width             | 50mm Hardox    | 50mm Hardox     | 50mm Hardox     |
| Number of bottom Tines | 10             | 12              | 14              |
| Tine Spacing (mm)      | 328            | 328             | 328             |
| Ram                    | 2 x 70mm Bore  | 2 x 70mm Bore   | 2 x 70mm Bore   |

All of our attachments are designed to operate at 200 BAR hydraulic pressure.  
Machines operating above 200 BAR will require a relief valve.



# Grass Fork & Contractor Grass Fork



## Grass Fork (GF)

The Prodig Grass Fork is designed to utilise smaller machines when handling grass or maize silage such as tractor loader, tele-handler or small articulated loader.

- Designed for farmers utilising their own machinery for maize and silage.
- Available in widths from 2.2m to 3m.
- Heavy duty fork back with vision windows to view outer tines when loading.
- 1250mm x 25mm square profile Hardox tines used in bottom bar for long service life.
- Our Hardox tines are made incorporating a replaceable wear tip meaning the tine never has to be replaced.
- Engineered and fabricated bottom section for superior structural strength and rigidity.
- Also available with 1250mm forged stone fork tines in steel bushes.
- Top spill frame as standard on all grass forks to increase volume and prevent spillage onto the loader.
- Bolt on or welded hitch system to suit all machines.



## Contractor Grass Fork (CF)

The Prodig Contractor Grass Fork is designed for large and medium wheeled loaders and large telehandlers handling grass silage in compact areas or with lower volumes.

- Designed for use on articulated loaders.
- Available in widths from 2.5m to 3.6m.
- Heavy duty construction using high yield structural hollow section and plate.
- 1400mm x 40mm square profile Hardox tines used in bottom bar for long service life.
- Our full range of Hardox tines are manufactured incorporating a replaceable wear tip meaning the tine never has to be replaced.
- Bottom wear pads made from 400 Brinell cutting edge.
- Full width spill frame to increase capacity and prevent spillage of material onto the loader.
- Hitches available to suit all machines.
- Optional extras: double side tines, bolt on centre spill frame for z-linkage, transport tine guard.

| Grass Fork         | GF2200     | GF2500     | GF2700     | GF3000     | CF 2500   | CF 2750   | CF 3000   | CF 3300   | CF 3600   |
|--------------------|------------|------------|------------|------------|-----------|-----------|-----------|-----------|-----------|
| Height (mm)        | 1150       | 1150       | 1150       | 1150       | 1415      | 1415      | 1415      | 1415      | 1485      |
| Width (mm)         | 2200       | 2500       | 2700       | 3000       | 2500      | 2750      | 2995      | 3300      | 3600      |
| Depth (mm)         | 1300       | 1300       | 1300       | 1300       | 1470      | 1470      | 1470      | 1470      | 1470      |
| Weight (kg)        | 310        | 350        | 365        | 380        | 570       | 620       | 670       | 720       | 770       |
| Tine length(mm)    | 1240 (48") | 1240 (48") | 1240 (48") | 1240 (48") | 1400(55") | 1400(55") | 1400(55") | 1400(55") | 1400(55") |
| Tine spacing(mm)   | 220        | 200        | 220        | 220        | 225       | 225       | 225       | 230       | 230       |
| Tine thickness(mm) | 25         | 25         | 25         | 25         | 40        | 40        | 40        | 40        | 40        |
| Number of tines    | 10         | 12         | 12         | 13         | 10        | 11        | 12        | 13        | 14        |

**ProDig Attachments**  
**Newtown, Bangenalstown**  
**Carlow, Ireland**

- +353 (0)59 972 7494
- +353 (0)86 7809888
- sales@prodigattachments.com
- www.prodigattachments.com

Your Contact: